

\$65 - Clutch
Zipper Closure, Interior attached key fob. 10"x5.5"x1.75" at base 6.5". Micro fiber handle attached to zipper.



\$40 - Coin Purse
7"x4"x1" Exterior Colors: Black Interior Styles: Black, Hot Pink, Lime Green, Red.



\$65 - Leather-Trimmed Wallet
Tri-Fold, 7.5"x4.5 when closed & 7.5"x13" when open. Interior zipper pocket, clear ID pocket, & credit card pockets.



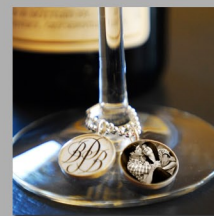
\$75 - Demi Bag
8.25"x6"x3", Interior zipper pocket. Metal feet & 20" handles are stitched to sides. Interior attached key fob.



\$285 Alexis Bracelet, Solid Sterling Silver, Measures 7 1/2"



\$265 Eileen Bracelet Length 7-1/2"



\$40 Wine Glass Charm, Pewter (2 charms)



\$42 Pewter Bouquet Charm. Includes cream ribbon.



JEWELRY, GIFTS & BAGS

Stonekast Studios offers solid sterling silver custom Photo Jewelry, Photo Accessories & Photo Bags!

■ Our Jewelry & Gifts capture your loved ones in an heirloom piece that will be treasured for years to come. Images are printed in color, sepia tone or black & white and then sealed into a solid sterling design using a unique WATERPROOF coating process.

■ A stylish Photo Bag is the perfect & practical way to show off your favorite images around the town.

■ THE PROCESS You select your favorite photo or photos and we will design your jewelry or Bag. Jewelry & bags are ready for pick up approximately 6 weeks after your final approval & payment is received. Ask about additional upgrades on bags including leather trim, collages and images on both sides of the bag.

■ PAYMENT INFORMATION Bags must be paid for in full when you place your order. 6% MI Sales Tax will be charged for services & products we offer.

■ Consultations and Sessions by Appointment Only.

■ We are members of the Professional Photographers of Michigan!

PORTRAIT JOURNALISTS
STEVE & MELANIE KECKEISSEN
6805 East Valley Rd, Mt Pleasant, MI 48858
989.779.2154 ■ Voice & Fax
989.400.6858 ■ Mobile
INFO@STONEKASTSTUDIOS.COM
WWW.STONEKASTSTUDIOS.COM

Consultations & Sessions by Appointment Only

11.01.10

JEWELRY, GIFTS & BAGS

STONEKAST STUDIOS

PHOTO BAGS



\$125 - Diaper Bag
Zipper Closure, 15.5"x11"x5" at base. 9"x7" interior zipper pocket, 2 elastic side bottle pockets. Water and stain resistant interior lining.



\$135 - Leather Around Towners
Zipper Closure, 11"x13"x5" at base. Leather on handles, trim and bottom. Interior zipper pocket, cell phone pocket, and mirror pocket.



\$130 - Leather Everyday Bag
Snap Flap Closure, Leather on handles, trim and bottom. 10.75"x7.75"x5" at base. Interior zipper pocket, cell phone pocket, mirror pocket, and attached key fob.



\$90 - Beach Tote
Snap Closure, 15"x13"x6" at base. Interior zipper pocket, cell phone pocket and mirror pocket.



\$135 - Leather Satchel
Zipper Closure, 12"x8.5"x5.5" at base. Leather handles and trim Interior zipper pocket, cell phone pocket and mirror pocket as well as key fob. 12" rolled leather handles with nickel ring hardware.



\$165 - Gigi Bag
Snap closure, 13"x9"x5" at base. Full length zipper divider pocket, 7" zipper pocket, 2 slip pockets 7/8"x25" Detachable leather handles w/nickel hardware key clip, metal feet & four choices of gusset fabrics.



\$120 - Leather Bucket Bag
Zipper Closure, Leather on handles, trim and bottom. 12"x10"x5" at base. Interior zipper pocket, cell phone and mirror pockets and attached key fob.



\$135 - Tote Bag
Zipper Closure, 16"x13"x4.75" at base. Full-length deep divider zipper pocket. Interior zipper pocket, cell phone pocket and mirror pocket.

THE EDGERTON CHARM COLLECTION



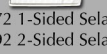
Solid Sterling Oval Link Bracelets with ring & toggle closure. Adjustable 7"-8" \$85 Small Oval Link, \$115 Large Oval Link



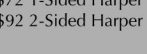
\$72 Margaret

\$70 Kayda

\$84 Annika



\$72 1-Sided Sela



\$92 2-Sided Harper



\$62 Taneka



\$78 Sadie



\$62 Nicole



\$62 Karrie



\$22 Heart



\$62 Shelise



\$64 1-Sided Rachel



\$90 2-Sided Rachel



\$58 Tucker



\$78 Evalina



\$22 Filigree



\$14 Faith



\$24 Love



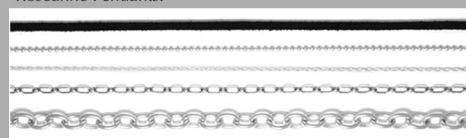
\$22 Mom



\$22 Fleur de lis

NECKLACES

Add pendant style to Black Leather chain, Ball Chain, Twist Chain or Open Chain. Price for these 4 chain styles listed below with pendant of choice. Oval Link price includes choice of pendant below. Not recommended for Linda & Roseanne Pendants.



Black Leather: 16" & 18" \$28

Ball Chain: 16", 18", 24" \$38

Twist Chain: 18" \$28

Open Chain: 16", 18" \$32, 24" & 36" \$62

Small Oval Link \$140, Large Oval Link \$180



\$80 Linda Necklace



\$80 Roseanne Pendant



\$130 Chloe Necklace



\$109 My Love Necklace Includes 16" or 18" Ball Chain



\$88 Denise Necklace



\$58 Sammy Pendant Includes 16" Black Leather

GIFTS



\$68 Money Clip, Sterling Silver add \$10 for engraving



\$84 Wallet & Money Clip Genuine Leather



\$150 Solid Sterling Cufflinks



\$62 Oval Belt Buckle, Solid Pewter



\$52 Willard Key Chain Genuine Leather & Pewter



\$38 Chance Tag Also a great Zipper Pull!



\$46 Magnetic Bottle Opener, Alloy/Pewter



\$62 Michael Belt Buckle, Solid Pewter



\$58 Keepsake Year Ornament, Solid Pewter



\$48 Evergreen Ornament, Solid Pewter



\$48 Aspen Ornament, Solid Pewter



\$62 Taylor Bracelet, Leather wristband & Pewter photo display. Adjustable 7 1/2" - 9 1/4" length



\$128 Emma Ring



\$118 Cadence Ring